

High-Performance Door

ASSA ABLOY RR300

ASSA ABLOY

ASSA ABLOY Entrance Systems

The global leader in
door opening solutions



ASSA ABLOY RR300



- Modular system allows custom configurations
- Fast opening and closing speed saves energy costs
- Space saving construction for almost unlimited possibilities of installation
- Fast and simple installation
- Maintenance-friendly design resulting in minimal service costs

DOOR DESIGN

Type

ASSA ABLOY RR300 S

ASSA ABLOY RR300 I

Design

Galvanized Steel

Stainless Steel

DOOR CURTAIN

The doors are available with clear PVC door curtain with coloured reinforcement stripes. Alternatively economic door curtain as Travi-top, sturdy RollTex® or NomaTex® can be delivered. Silicone-free door curtains are also possible.

COLOURS

Basic colours of reinforcement stripes are red or blue.

A large variety of other colours on request such as orange, grey, yellow, beige, green, white.



WINDOWS

For door curtain made from clear PVC with coloured reinforcement stripes big visible areas are available.

Options for other types of curtain vision panels or windows can be delivered.



ACTUATORS

Individual applications can include additional safety devices. Actuators such as infrared, radar detectors, push buttons, vehicle detector loops or radio transmitters can be added to the control system. Please contact us for additional information for your specific needs.

KNOCK-OUT CAPABILITY

For doors from width ≥ 1300 mm a knock-out capability is available. This allows non-operation times after crash and it can easy manual reset after an impact.

Not applicable in version "Mini" with low bottom profile for reduced installation height.



SAFETY FEATURES

The door has an electrical safety contact edge. A door line photocell also prevents the door closing when objects or people are in the doorway.



MOTOR POSITION

Gear motor with drop down safety gearbox, available left or right hand side.

TOP ROLL

As Standard aluminium roll with galvanized shafts.

As Option aluminium roll with shafts and bearing in stainless steel or top roll and shafts made from stainless steel.

TOP ROLL COVER

An optical upgrade and to protect the door curtain against dust, moisture and contact.

Optional

- galvanised steel
 - stainless steel 0°
 - stainless steel with 30° decline
- necessary at DH < 2500 mm

MOTOR COVER

An optical upgrade and to protect the door curtain against dust, moisture and contact.

As Option

- Powder coated steel 5° decline
- Stainless steel 15° decline
- Plastic grey RAL 7040

not with coiling chain

necessary at DH < 2500 mm

ASSA ABLOY CONTROL BOX

As standard the door is made of a relay control system MCS-R.

According to the operation conditions optional a contactor control system ACS 50 and a frequency converter control system MCS-FC and MCC are available. With the basic control system MCS-R and MCS-FC a convenient operation with high flexibility, fast start-up and easy handling of the door is allowed. The powerful MCC frequency converter control system with Vectoring of the drive unit, connected to the wide range of functions, enables the complex application of the door.

The MCC guarantees a soft start, optimal increase in speed, maximum speeds and a long service life of the door.

Figure shows MCC control system.

BOTTOM PROFILE / FLEX EDGE

For the bottom profile aluminum or stainless steel with a soft rubber profile can be chosen. To reduce the over-lintel dimension, a bottom profile with a reduced height can be used (Variant Mini).

One further option is our Flex Edge Version (flexible bottom profile without aluminum extrusion and coiled cable).

MANUAL ACTIVATION

The door can be operated manually with a crank in the event of a power failure. Alternatively an hand chain operator is available (not available with drive cover).



High-Performance Door ASSA ABLOY RR300

Applications

- As an interior door to separate rooms and climate
- In protected outdoor areas with low wind load and moderate temperatures
- Made from stainless steel for areas where hygiene requirements must be met
- In production lines, conveyor systems or transport locks

Advantages of the ASSA ABLOY RR300

- Modular system allows custom configurations
- Fast opening and closing speed saves energy costs
- Space saving construction for almost unlimited possibilities of installation
- Fast and simple installation
- Maintenance-friendly design resulting in minimal service costs

Safety features

The door is designed according to the Workplace Directive of the UVV regulations and the harmonized CE Guidelines including the EN 13241-1.

Indication of risk

The safety of the door is designed for normal use and for vehicles in an industrial environment corresponding to the harmonized CE-Guidelines. In consideration of the on site situation – especially in case of pedestrian use – additional safety measures, such as additional actuators may be required. In addition, special environmental conditions may impact the choice of door type. For more information or to schedule an on-site inspection, please contact our sales engineer.

| Door curtain | PVC with colored fabric reinforcement strips | PVC with colored fabric reinforcement strips silicone-free | RollTex® | NomaTex® | Top-Door curtain 1,3 mm max. 3500 × 3500 |
|---------------|--|--|----------------------|--|--|
| Windows | – | – | • | • | – |
| Vision panels | – | – | – | • | • |
| Wind tabs | ✓ | ✓ | ✓ | ✓ | ✓ |
| Blue | ✓ 5002 | • 5010 | • 5002 | • H 5005 | • 5010 |
| Red | • 3002 | • 3002 | | • NA 3000 | • 3002 |
| Orange | • 2011 | • 2011 | • 2009 | • H 2009 | |
| Grey | • 7035 | • 7037 | • 7001 ⁵⁾ | • 7038 ⁴⁾ • 7045 ⁶⁾ | • 7035 |
| Yellow | • 1021 | • 1021 | | • NA 1023 ⁴⁾ | |
| Green | • 6018 | | | | |
| Beige | • 1014 | | | | |
| White | • 9016 | • 9010 | | | |
| Black | | • 9005 | | | |

• Option ✓ Standard – not possible

1) Height < 2,500 mm, always with cover
2) Deviations possible depending on other properties
3) Depending on load alternation/minute, door size and installation location
4) According to the requirements of the FDA (Food and Drug Administration)
5) If RollTex Original = paintable
6) Hardly flammable

| Technical Data | ASSA ABLOY RR300 S/I | Option „MINI“ |
|---|---|----------------------------------|
| Application | Interior door | Interior door |
| Door dimensions DW (min. / max.) LB ²⁾ DH (min. / max.) LH ²⁾ | 1000 / 4000 mm 1000 / 4200 mm | 500 / 3500 mm 500 / 3500 mm |
| max. area | 16,8 m ² | 12,25 m ² |
| Open/Close max. (m/s) ²⁾ | 2,0 / 1,0 | 1,0 / 1,0 |
| Cycles per minute max. * exact number of cycles depending on application | MCS-R = 0,5 MCS-FC/ACS 50 = 1 MCC = 3 | MCS-R = 0,5 |
| Wind resistance (EN 12424) | class 1 | class 0 |
| Noise emission | < 70 dB A | < 70 dB A |
| Temperature range max. (Extended on request) ³⁾ | +10°C - +40°C (0 up to +60°C) | +10°C - +40°C (0 up to +60°C) |

| Surface / Material | | |
|--|--|--|
| Side frame | ✓ galvanised steel • stainless steel | ✓ galvanised steel • stainless steel |
| Bottom profile ²⁾ | ✓ Aluminium • stainless steel • flexible „Flex-Edge“ | – |
| Bottom profile Mini | – | ✓ Anodized aluminum |
| Bottom profile with extended flexible seal | • | • |
| Top roll cover ¹⁾ | • galvanised steel • stainless steel | • galvanised steel • stainless steel |
| Motor cover ¹⁾ | ✓ Plastic grey • Powder coated steel • stainless steel | ✓ Plastic grey • Powder coated steel • stainless steel |

| Safety features | | |
|--|--------------|--------------|
| Electrical safety contact edge | ✓ | ✓ |
| Power supply of the contact edge | Spiral cable | Spiral cable |
| Door line photocell in side frame | ✓ | ✓ |
| Drop down protection in drive unit | ✓ | ✓ |
| Crash-System at Bottom profile ²⁾ | • DW≥1300 mm | – |

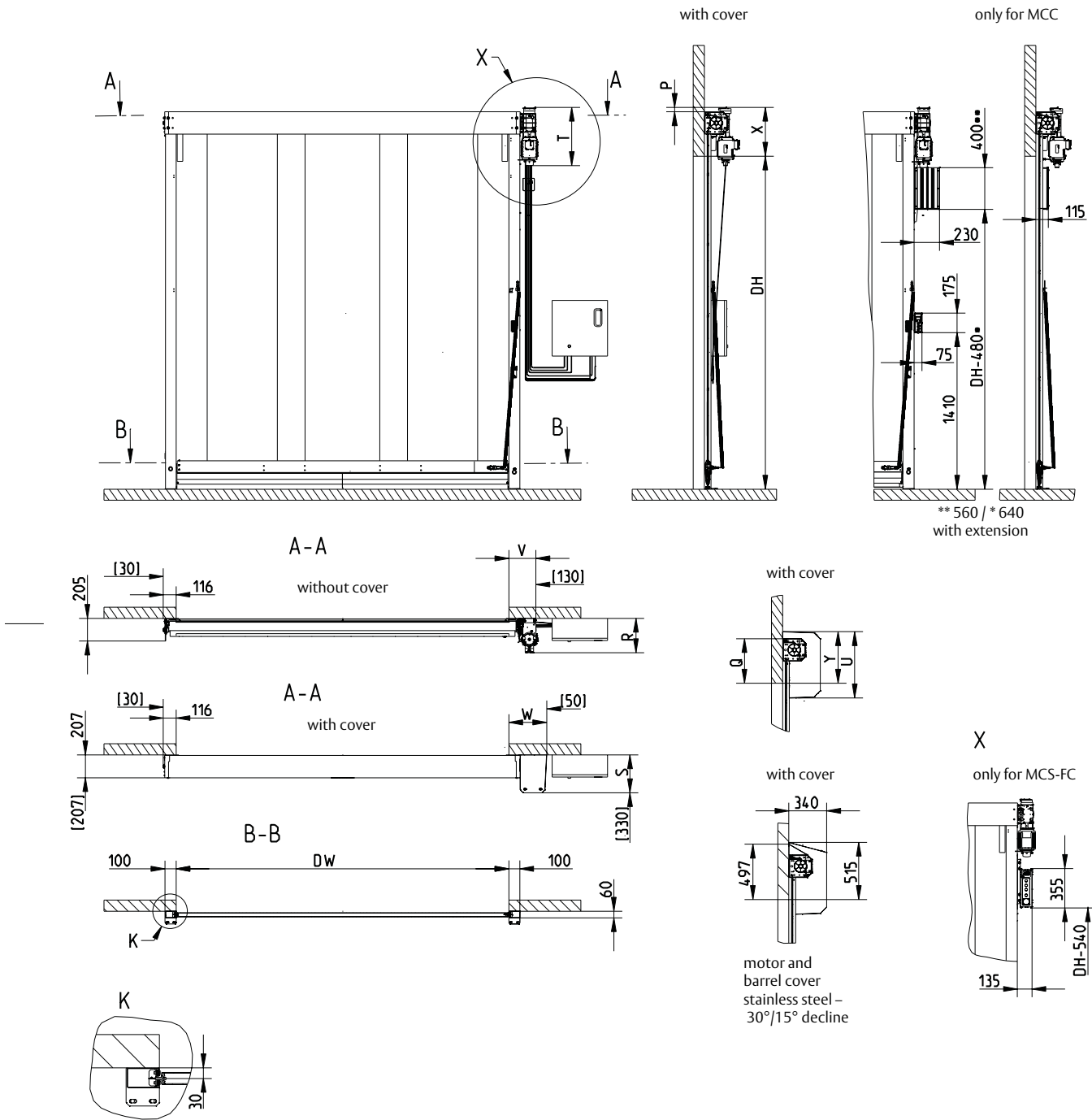
| Equipment | | |
|---|-------------------------|---|
| LED traffic light | • | • |
| Lintel seal | • | • |
| Traffic light with direction detection | ✓ MCC • MCS-R/MCS-FC | • |
| Traffic light without direction detection | ✓ | ✓ |
| Flashing alarm light | ✓ | ✓ |

| Drive unit | | |
|-------------------|-------------------------|-------------------------|
| Gear heating | • | • |
| Chain drive | • (without motor cover) | • (without motor cover) |
| Manual activation | Crank handle | Crank handle |

| Control system | | |
|--|---|---|
| MCC Open/Close max. (m/s) ²⁾ | • 2,0 / 1,0 | – |
| MCS-FC Open/Close max. (m/s) ²⁾ | • 1,5 / 0,8 | – |
| MCS-R Open/Close max. (m/s) ²⁾ | ✓ 1,0 / 1,0 (max. DW3500 × DH3500 mm) | ✓ 1,0 / 1,0 (max. DW3500 × DH3500 mm) |
| ACS 50 Open/Close max. (m/s) ²⁾ | • 1,0 / 1,0 (max. DW3500 × DH3500 mm) | – |
| Separate display / control | only at MCC | – |
| Fuse protection by site | 10 A (C-characteristic) (at 220/230V 16 A) | 10 A (C-characteristic) (at 220/230V 16 A) |
| Protection | ACS50/MCC = IP55 MCS = IP54 | MCS-R = IP54 |
| Potential-free contacts | ✓ MCS / ACS50 • MCC | ✓ |

| Network connection | | |
|--------------------|--|--|
| ACS 50 | Standard: 3L(N)PE/220/230/380/400/415V; 50Hz with transformer: 3L(N)PE/440/480/500V; 50Hz | |
| MCS-R | 3/(N)PE: 400V 50Hz | |
| MCS-FC | 1/(N)PE: 230V 50-60Hz | |
| MCC | Standard: 3L(N)PE/380/400/415/440/460/480V; 50/60Hz with transformer: 3L(N)PE/220/230/500V; 50/60Hz | |

General drawing ASSA ABLOY RR300



| Without motorcover | | | | |
|--------------------|----------|---------------------------------|-------|-------|
| | Standard | | Mini | |
| | MCC | ACS 50, without control, MCS-FC | MCS-R | MCS-R |
| X | 440 | 440 | 400 | 353 |
| V | 265 | 265 | 245 | 245 |
| R | 315 | 315 | 240 | 240 |
| T | 550 | 520 | 415 | 415 |
| P | 42 | 42 | 0 | 0 |

| With motorcover | | | |
|-----------------|-------------------------|---------|-----------------|
| | Standard / Mini (MCS-R) | | |
| | Plastic | Steel | Stainless steel |
| Y | 470/424 | 465/419 | 515/469 |
| W | 346 | 342 | 342 |
| S | 340 | 340 | 340 |
| U | 610 | 600 | 650 |
| Q | 400/355 | 400/355 | 400/355 |

| Available sizes | | DW | DH |
|-----------------------------|----------|------|------|
| Standard | min.* | 1000 | 1000 |
| | max.** | 4000 | 4200 |
| Mini (MCS-R) | min.* | 500 | 500 |
| | max.** | 3500 | 3500 |
| *Crash | min.:* | 1300 | 1000 |
| ** Top 0,8 mm | max.: ** | 3000 | 3000 |
| ** ACS 50, Top 1,3 mm MCS-R | max.: ** | 3500 | 3500 |

[] = Space needed for installation

| ASSA ABLOY Control Unit | | | | | |
|--|----|-----------------|-----------------|-----------------|-----------------|
| | | ACS 50 | MCC | MCS-FC | MCS-R |
| Dimensions B × H × T | mm | 300 × 400 × 210 | 220 × 380 × 100 | 215 × 345 × 140 | 215 × 345 × 140 |
| Dimensions frequency converter B × H × T | mm | | | 106 × 355 × 106 | |

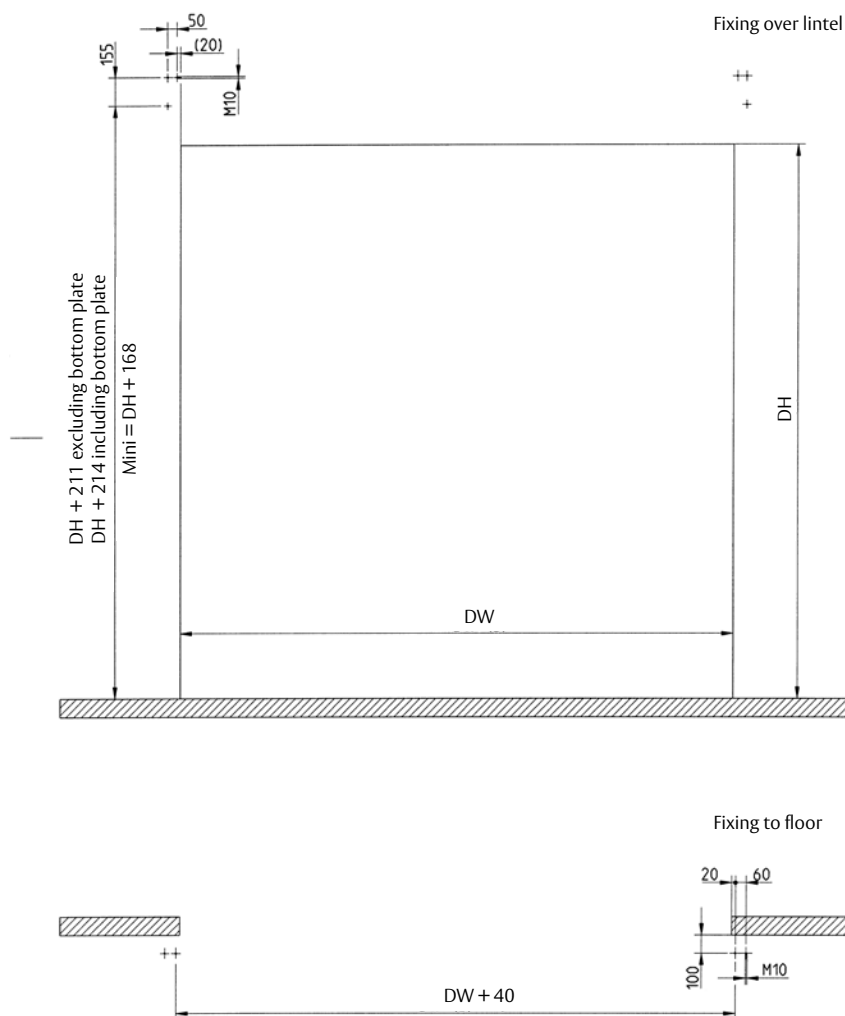
ASSA ABLOY Entrance Systems is a leading supplier of entrance automation solutions for the efficient flow of goods and people. Building on the long-term success of the Besam, Crawford, Albany and Megadoor brands, we offer our solutions under the ASSA ABLOY brand. Our products and services are dedicated to satisfying end-user needs for safe, secure, convenient and sustainable operations.

ASSA ABLOY Entrance Systems is a division of ASSA ABLOY.

ASSA ABLOY

assaabloyentrance.com

Fixing plan ASSA ABLOY RR300



8300R00010/c



ASSA ABLOY Entrance Systems

assaabloyentrance.com

Follow us:



Please enter ASSA ABLOY Entrance in the channel's search field.