



Data Sheet
High Performance Door
RapidRoll® 600

Engineered Elegance with State-of-the-Art Technology

The **RapidRoll® 600** uses a modular design to provide superior operation.

Fast opening and closing speeds improve workflow and lower utility and maintenance costs while offering high wind resistance, substantial safety features, and reliable performance in high traffic areas.

With a variety of features and options this durable high performance door can be configured for a wide range of interior or rugged exterior applications.



MCCVectorControl
The next generation in
intelligent door control systems
by Albany Door Systems

High Performance Door RapidRoll® 600



ADVANTAGES OF ALBANY RAPIDROLL® 600

- Modular design concept enables the door to be custom configured for a variety of applications
- Opening speeds up to 3,2 m/s
- MCC VectorControl System is flexible, modular and programmable
- Advanced safety features reduce the chance of harm to people, product and equipment
- Balancing and tensioning system provides smooth operation and controls door movement by adding constant tension to the door curtain
- Contoured design integrates style and technology for a bold modern look
- wind rating up to class 3 (33 m/s)
- Door curtain made of extremely durable and tear resistant RollTex® fabric, including a 5 year warranty, available as option

APPLICATION

- to separate rooms and environments in interior positions
- saving energy and avoiding air drafts
- as an exterior door for demanding outside conditions

DESIGN

Side frames made of anodised aluminium on both sides of the curtain guide its upward and downward motion. The simple hinge principle of the side frame assures quick and easy opening for maintenance and service access. A top roll cover made of anodised aluminium protects the top roll. A counterbalance tensioning system provides smooth operation.

DOOR CURTAIN

Depending on application, the door curtain can be chosen from extremely rigid, tear resistant RollTex® fabric. The coated fabric seals against moisture and drafts. Standard colours are blue, orange and grey. Other options, like a curtain made of clear PVC with coloured reinforcement stripes are available.

COUNTERBALANCE, CURTAIN TENSION SYSTEM

The counterbalance system is achieved by means of tension springs. Additionally, the combined curtain tension system assures a firm and taut curtain regardless of high wind loads.

DRIVE UNIT

3 phase brake motor and hollow shaft gearbox mounted directly on the top roll shaft. The drive has a flexible connection to the side frame by a torque arm. A pulse encoder provides the control system with information about the door curtain movement direction, speed and position. The dynamic brake function is effected electronically. Drive unit position can be chosen right or left side.

CONTROL SYSTEM

Innovative frequency converter control system type MCC^{VectorControl}. Integrated design: Control system mounted at the side frame close to the motor. Graphical user interface with control buttons integrated in the side frame. Please refer to technical data.

MANUAL ACTIVATION

In the event of a power outage the manual release handle enables the door to be opened easily.

SAFETY

The door is equipped with an electric self testing safety edge or a patented pre-running photocell, detecting people or objects, reversing the door before contact. The door is also supplied with an integrated door line photocell and as option an integrated IR detector in the top roll cover or an integrated light curtain in the side frame can be chosen.

SAFETY FEATURE

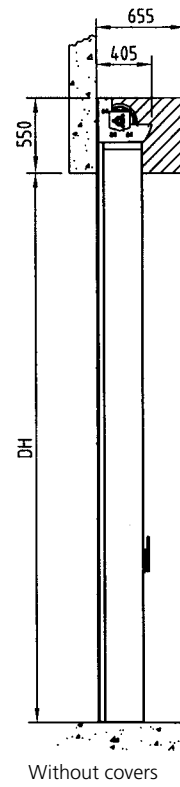
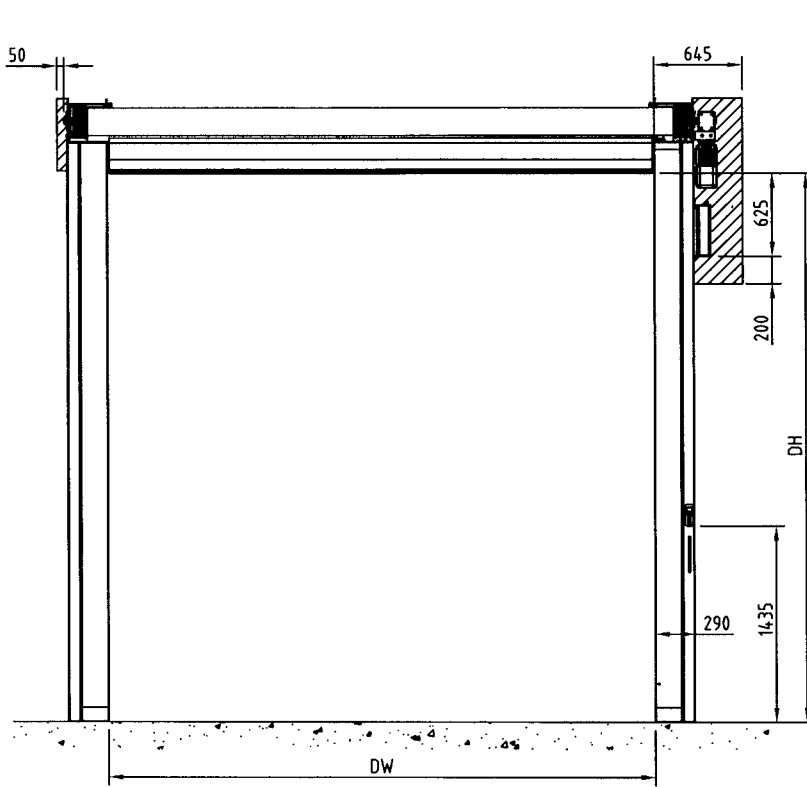
The door is designed according to the Workplace Directive of the UVV regulations and the harmonized CE Guidelines including the EN 13241-1.

INDICATION OF RISK

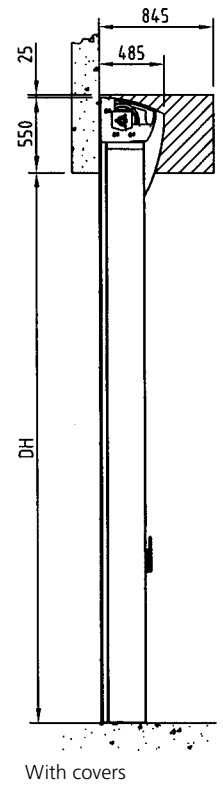
The security of the door is designed for normal use and for vehicles in an industrial environment corresponding to the harmonized CE-Guidelines. In consideration of the on site situation – especially in case of pedestrian use – additional safety measures, such as additional actuators may be required. In addition, special environmental conditions may impact the choice of door type. For more information or to schedule an on-site inspection, please contact an Albany Door Systems sales engineer.

The RapidRoll® 600 is based on a completely modular system. The table below shows the specification of two basic configurations that can be widely modified to almost any applications.

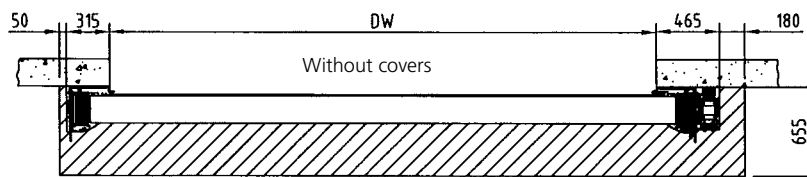
Technical Data	base configuration	ultra configuration
Exterior door	—	suitable
Interior door	suitable	suitable
Wind resistance (EN 12424)	class 1	class 3
Mounting position	inside or outside	
Door dimension (mm) For details please note general drawing!		
DW min. / max.	1500 / 6000 mm	
	DW > 6000 mm on request	
DH min. / max.	2000 ¹⁾ / 6000 mm	
Opening direction	vertical	
Surface		
Side frames	anodised aluminium	
Bottom profile	aluminium	
Top roll		
- steel without space for wind tabs	✓	—
- steel with space for wind tabs	—	✓
Covers (optional)		
Cable drum covers	● ¹⁾	● ¹⁾
Motor cover (Painted steel)	● ¹⁾	● ¹⁾
Top roll cover	● ¹⁾	● ¹⁾
Door curtain		
RollTex® Original	●	✓
RollTex® Plus	●	●
PVC with coloured reinforcement stripes	✓	●
PVC with coloured silicon free stripes	●	●
Wind tabs	—	✓
Drive unit	electrical	electrical
Control system	MCC ^{VectorControl}	MCC ^{VectorControl}
Motor power / kW	1,1 kW	1,1 kW
Additional opening height	●	●
Potential free contacts	●	●
Fuse protection	12 A	12 A
Control voltage	24 V DC	24 V DC
Protection degree	IP 55	IP 55
3L(N)/PE 380/400/415/440/480V, 50/60 Hz	✓ ²⁾	✓ ²⁾
Safety		
Pre-running safety photocell	●	●
Electrical safety contact edge	✓	✓
Door line photocell	✓	✓
Light curtain (integrated)	●	●
Curtain tension	✓	✓
Counterbalance	✓	✓
Fall down protection (by tension springs)	✓	✓
Knock-out capabilities		
- Self Repairing Door (SRD)	●	—
- With automatic reset	●	●
Self opening, partly	✓	✓
Manual activation	✓	✓
(with bowden lever operated from the floor)		
Sealing bag on bottom profile	●	✓
Top roll sealing	●	✓
Bottom beam stopper	●	✓
Brush sealing between side frame / curtain	●	✓
Speed (m/s)		
Open/close up to max. m/s	2,0 / 0,8	3,2 / 0,8
Traffic light function		
Without direction detection	✓ 24 V DC	✓ 24 V DC
With direction detection	✓ 24 V DC	✓ 24 V DC
Flashing alarm light	✓ 24 V DC	✓ 24 V DC
Error message	✓ plain text	✓ plain text
● Optional ✓ Standard — Not possible		
¹⁾ For doors with DH < 2300 mm cable drum-, top roll- and motor-cover are required according to the standard EN 13241-1.		
²⁾ Transformer necessary for 220/230/500 V.		



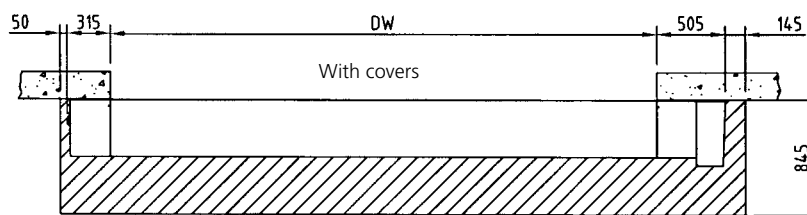
Without covers



With covers



Without covers

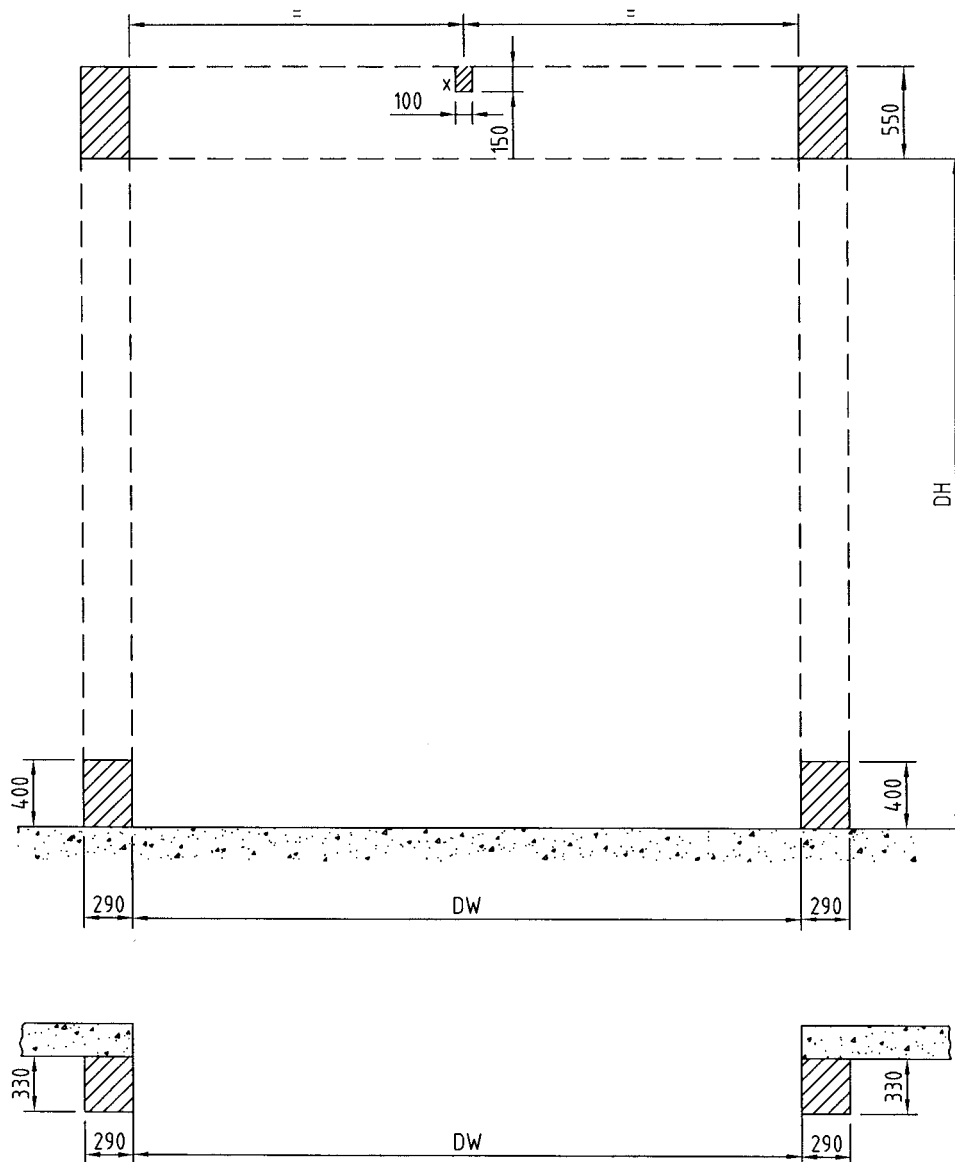


With covers

The drive unit shown here is mounted on the right-hand side of the door, but left-hand side units are also available.

Shaded areas indicate the space that is needed for installation and servicing. If the required space is not available, please consult Albany Door Systems.

Drawing-No: 600-060424-GEN



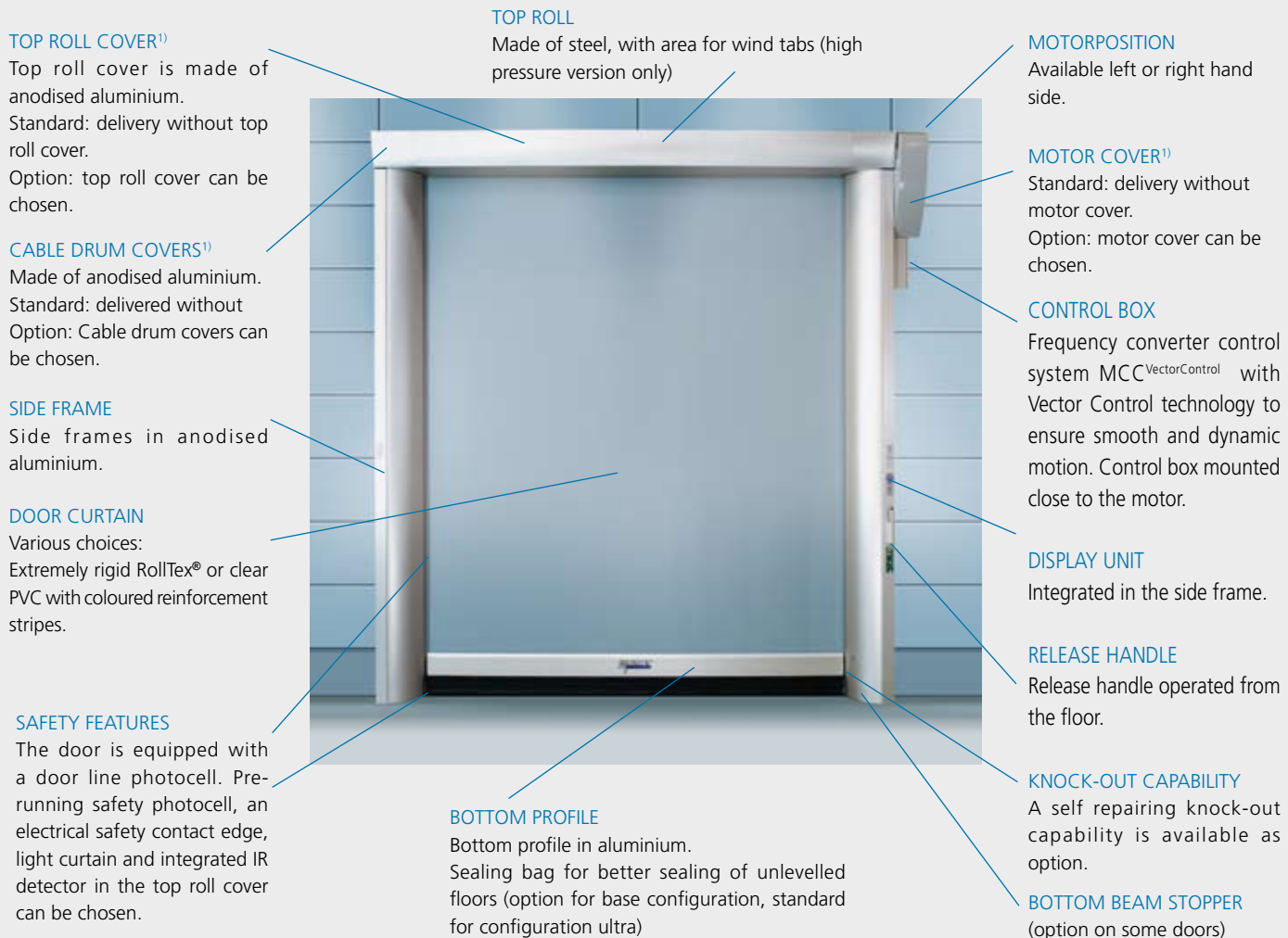
Check that the walls are satisfactory for installing the door.
Use securely-anchored mounting plates.

Area between mounting plates may not exceed the surface of these plates.

Bottom wall plates just needed if the door could not be fixed to the floor.

X-Mounting plate for center support, used for $DW > 3500$ mm. Have to be in the same linear as the fixing plates.

Drawing-No: 600-060508-FIX



ACTUATORS

Individual applications can include additional safety devices. Actuators such as infrared, radar detectors, push buttons, vehicle detector loops or radio transmitters can be added to the control system. Please contact us for additional information for your specific needs.

Notes:

¹⁾ For doors with DH < 2300 mm cable drum-, top roll- and motor cover are required according to the standard EN 13241-1.



Products shown may include additional options.



Fully integrated electronic frequency converter control system MCC^{VectorControl} with Vector Control technology to ensure smooth and dynamic motion.



Side frame with hinged covers offers easy and quick access for service and maintenance.



Integrated, clean and modern design.



Display unit with foil keys and a graphical display offering easy operation and maintenance.



Products shown may include additional options.

ALBANY DOOR SYSTEMS

ASIA

KIARA PARK 172-3-2 • JLN. BURHANUDDIN HELMI
TTDI, 60.000 KUALA LUMPUR
PHONE: +60 (0) 3 77 27 01 84 • FAX: +60 (0) 3 77 27 01 84
INFO.ADS.MY@ALBINT.COM

AUSTRALIA

23 FAUNCE ST. WEST GOSFORD • 2250 NSW
PHONE: +61 (0) 2 / 43 23 23 86 • FAX: +61 (0) 2 / 43 24 54 11
SALES.ADS.AU@ALBINT.COM

GERMANY

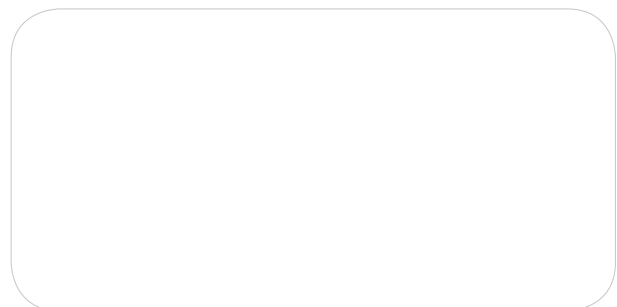
AM MONDSCHEN 25 • 59557 LIPPSTADT
PHONE: +49 (0) 29 41 / 766-0 • FAX +49 (0) 2941 / 766-294
VERKAUF.ADS.DE@ALBINT.COM

SWEDEN

BOX 509 • S - 301 80 HALMSTAD
PHONE: +46 (0) 35/14 73 00 FAX: +46 (0) 35/14 73 99
SALES.ADS.SE@ALBINT.COM

USA

975-A OLD NORCROSS ROAD • LAWRENCEVILLE • GA 30045-4321
PHONE: +1 (0) 7 770 / 338 / 5000 • FAX: +1 (0) 770/338/5024
SALES.ADS.US@ALBINT.COM



Albany Door Systems products and services are available around the world. For a subsidiary or representative in your region visit

WWW.ALBANYDOORS.COM